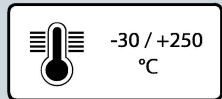
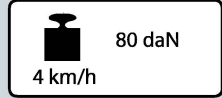
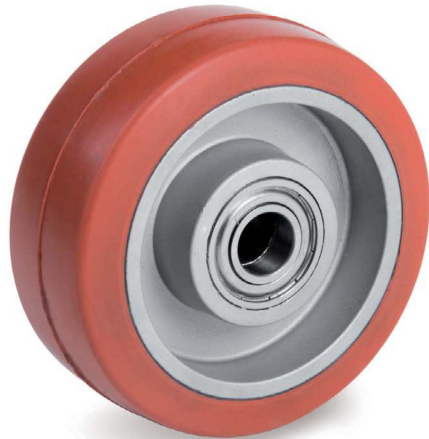


SILICONE RUBBER WHEELS WITH ALUMINIUM CENTRE



INOX



Description

Tyre: red non-marking silicone rubber, hardness 80 Shore A, resistant to temperatures up to 250°C.

Centre: aluminium.

Hub with ball bearings with silicone grease for high temperatures, interference assembly in the seats obtained by moulding.

Uses

Suitable for use at temperatures from -30 up to +250°C. Particularly suitable for intermittent use in baking ovens (maximum permanence at 250°C is of 30 minutes, with subsequent period of resting of at least 30 minutes, at room temperature). They have excellent elasticity features and guarantee an easy overcoming of obstacles on uneven flooring also; compared to high temperature solid wheels, they allow a significant noise reduction.

They are combined with brackets and axle components specific for high temperatures; all wheels are also fitted with threadguards.

Not suitable in presence of obstacles along the path or on delicate flooring.

Environments of use

Suitable for industrial and institutional environments. They are resistant to medium-harsh chemical agents and humidity. Not recommended in areas with strong acids and oils.

WEAK ACIDS		WEAK BASES	
STRONG ACIDS		STRONG BASES	
WATER		HYDROCARBONS	
ALCOHOL		SOLVENTS	

For information on the compatibility of the component wheel materials with specific aggressive chemical substances, see table at page 36.

Floors



Suitable for use on tiles, resin-cement; not recommended on abrasive, unpaved floors or in the presence of processing residues.

Not suitable on delicate floor or with obstacles along the path.

They do not mark the floor.



Force required to push or tow a wheel

 	50 kg	75 kg	100 kg
100 mm	<1	4	---

For each load and diameter, the table indicates the force (in daN) needed to push or tow a single wheel at the constant speed of 4 km/h on smooth flooring. For manual handling of a 4-wheeled trolley we recommend diameters that have values < 5 daN, for frequent handling we recommend diameters with values < 3 daN.

Available with brackets



Standard-duty brackets NL

Maximum carrying capacity 80 daN - available diameters 100 mm
Top plate and bolt hole fittings. Available with front brake.



Stainless steel standard-duty brackets NLX

Maximum carrying capacity 80 daN - available diameters 100 mm
Top plate and bolt hole fittings. Available with front brake.

HAJTA STECHNIKA hu

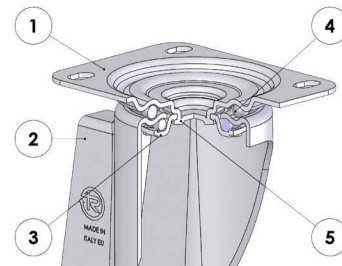
SERIES **72G**

SILICONE RUBBER WHEELS WITH ALUMINIUM CENTRE



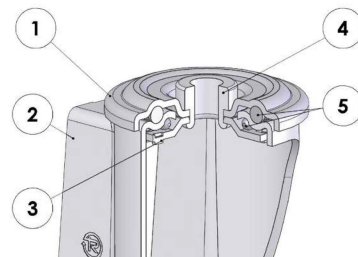
mm	mm	kg	CODE	mm	mm	Static	4 km/h	250 °C	250 °C	250 °C
mm	mm	kg	CODE	mm	mm	daN	daN	daN	daN	daN
100	40	0.43	722152	15	40	100	80	80	40	40

Standard-duty brackets NL - max carrying capacity 80 daN



- 1) Plate: electrolytically galvanised steel plate
 - 2) Fork: electrolytically galvanised steel plate
 - 3) Ball race ring: electrolytically galvanised steel plate
 - 4) Swivel actions: double ball ring with grease lubrication for high temperatures
 - 5) King pin: integrated with the plate and cold-riveted
- Available with total front foot brake

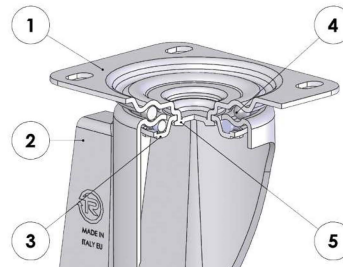
mm	mm	kg	CODE	kg	CODE	kg	CODE	mm	mm	mm	mm	mm	mm	4 km/h	4 km/h	250 °C
mm	mm	kg	CODE	kg	CODE	kg	CODE	mm	mm	mm	mm	mm	mm	daN	daN	
100	40	0.96	724452PF	0.71	726252PF	1.17	727152PF	128	100x85	80x60	9	35	120	80	40	



- 1) Plate: electrolytically galvanised steel plate
 - 2) Fork: electrolytically galvanised steel plate
 - 3) Ball race ring: electrolytically galvanised steel plate
 - 4) King pin: bushing in electrolytically galvanised steel
 - 5) Swivel actions: double ball ring with grease lubrication for high temperatures
- Available with total front foot brake

mm	mm	kg	CODE	kg	CODE	mm	mm	mm	mm	mm	mm	4 km/h	4 km/h	250 °C
mm	mm	kg	CODE	kg	CODE	mm	mm	mm	mm	mm	mm	daN	daN	
100	40	0.86	727352PF	1.07	727452PF	128	73	12	35	120		80	40	

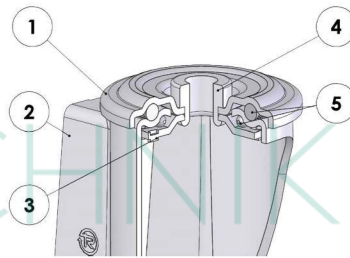
Stainless steel standard-duty brackets NLX - max carrying capacity 80 daN



INOX

- 1) Plate: AISI 304 stainless steel
 - 2) Fork: AISI 304 stainless steel
 - 3) Ball race ring: AISI 304 stainless steel
 - 4) Swivel actions: double stainless steel ball ring with grease lubrication for high temperatures
 - 5) King pin: integrated with the plate and cold-rieveted
- Available with total front foot brake

mm	mm	kg	CODE	kg	CODE	kg	CODE	mm	mm	mm	mm	mm	mm	daN	daN	250 °C	
100	40	0.96	724462PF	0.71	726262PF	1.17	727162PF	128	100x85	80x60	9	35	120	80	40	4 km/h	4 km/h



INOX

- 1) Plate: AISI 304 stainless steel
 - 2) Fork: AISI 304 stainless steel
 - 3) Ball race ring: AISI 304 stainless steel
 - 4) King pin: bushing in stainless steel
 - 5) Swivel actions: double stainless steel ball ring with grease lubrication for high temperatures
- Available with total front foot brake

mm	mm	kg	CODE	kg	CODE	mm	mm	mm	mm	mm	daN	daN	250 °C				
100	40	0.86	727362PF	1.07	727462PF	128	73	12	35	120	80	40	4 km/h	4 km/h			